

## MARS

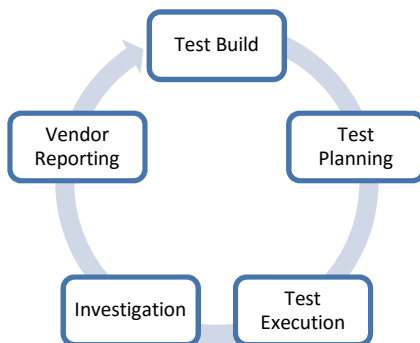
### Features

- Keyword driven editor used to define tests, enabling business end-users and technical QA staff alike an easy migration path from traditional testing to automated testing
- Specialized software to control the execution of tests
- Scheduling engine to make efficient use of hardware resources
- Statistical reporting engine to meet individual governance or regulatory requirements

### Regression Testing Events

- TPG Upgrades
- TPG Service Packs
- TPG Hot Fixes/Bug Fixes
- Performance Testing
- Stress Testing
- Merging application instances
- New and existing process flows
- New Business transactions
- Software migration to new hardware

## Regression Testing Lifecycle



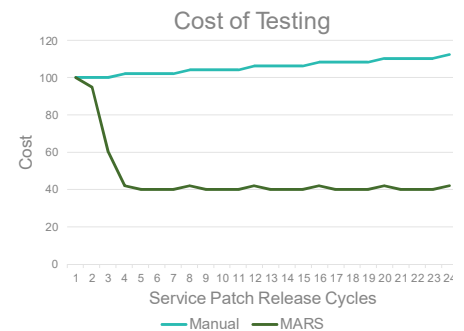
MARS easily handles ALL Regression Testing Events and our flexible approach allows your company the option of outsourcing the entire Regression Testing Lifecycle, or individual components,

### About MARS

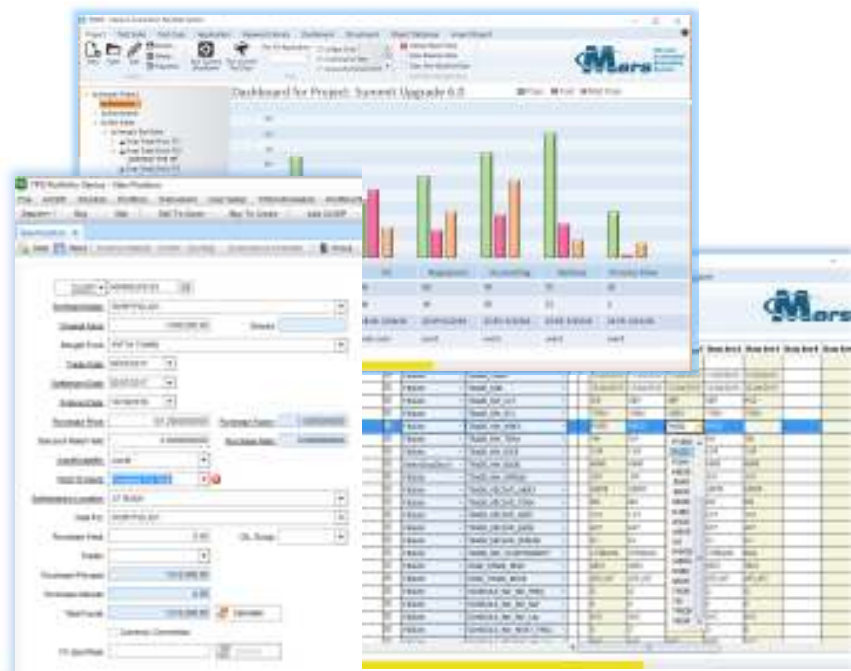
- ✓ MARS is an automated testing framework optimized for TPG, enabling enterprise wide validation of user interfaces, data formats (delimited text files, FpML, XML, etc.) and data sources (Oracle, Sybase and SQL Server).
- ✓ MARS radically shortens testing cycles, cuts costs and decreases project risks for small to enterprise-wide applications. MARS' robust keyword and data driven hybrid framework increases the effectiveness, efficiency and coverage of your software testing
- ✓ MARS is being used today at very prominent government and public financial institutions, creating extreme value via time (65%+) and money saved in regression testing execution
- ✓ MARS supports all modules with in TPG

### Benefits

- ✓ Affordable
- ✓ Greater Accuracy
- ✓ Increased Efficiency
- ✓ Reusability
- ✓ Reduced Operational Risks
- ✓ Increased Flexibility



### User Intuitive and User Friendly Interface



Marquis is a leading provider of FinTech consultancy and integration services